



ProRT Reverse Transcriptase

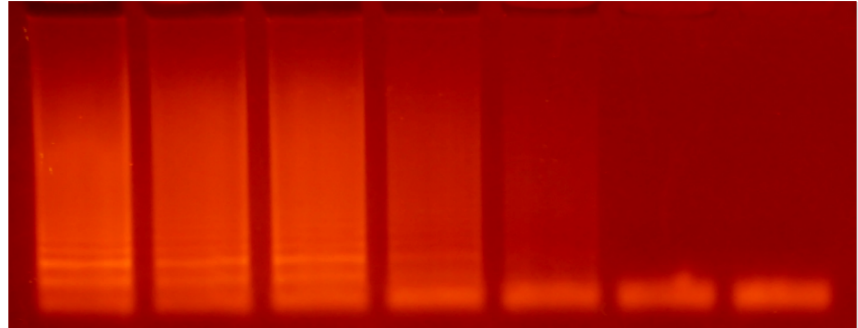
Datasheet, Version 2/2016

protean

On the bow of top biotechnology

Catalog #	1972
Synonyms	MMLV-RT, Thermostable RT H-
Type	Recombinant
Source	E. coli
Species	MMLV
Tag	His6
Form	Liquid

10⁴ 10³ 10² 10¹ 1 ct- RT-



Purity	>95% by SDS PAGE
Shipping	Ice pack

RT-LAMP assay detecting SARS-CoV-2 virus.
Serial dilution of viral isolate (copy numbers).

Introduction

Moloney Murine Leukemia Virus encoded sequence of reverse transcriptase was in silico optimized and produced in E.coli strain.

Description

Highly active recombinant enzyme with an increased thermal stability. RNase H-minus fragment of reverse transcriptase suitable for all molecular techniques requiring reliable reverse transcriptase activity, such as RT-PCR and RT-LAMP assays. An increased thermal stability of this particular enzyme allows coupled reverse transcription at elevated temperatures up to 60°C, which results in an increased sensitivity and specificity of various detection techniques. The concentration is 200 U/ul.

Application

RT-LAMP, RT-PCR, RT-qPCR

Purification method

Affinity chromatography. The enzymes supplied by Protean Ltd. are manufactured in a certified environment under ISO 9001 and ISO 13485 international standards, which fully qualifies them for use in downstream GMP certified processes.

Formulation

Storage buffer: 10mM Tris (pH 7.5), 50mM KCl, 1mM DTT, 0.1mM EDTA, 0.1% Triton, 50% glycerol.
10x Reaction Buffer: Proprietary optimized buffer.

Specificity

RNA

Storage

Store at -20°C

Analyte specific reagent (ASR) manufactured under ISO 13485.

Country of origin: Czech Republic

Protean s.r.o.
Pod Lesem 9
373 16 Dobruška u CB
The Czech Republic

ISO 9001 & ISO 13485
CERTIFIED



www.protean.bio
info@protean.bio
+420 380 120 427